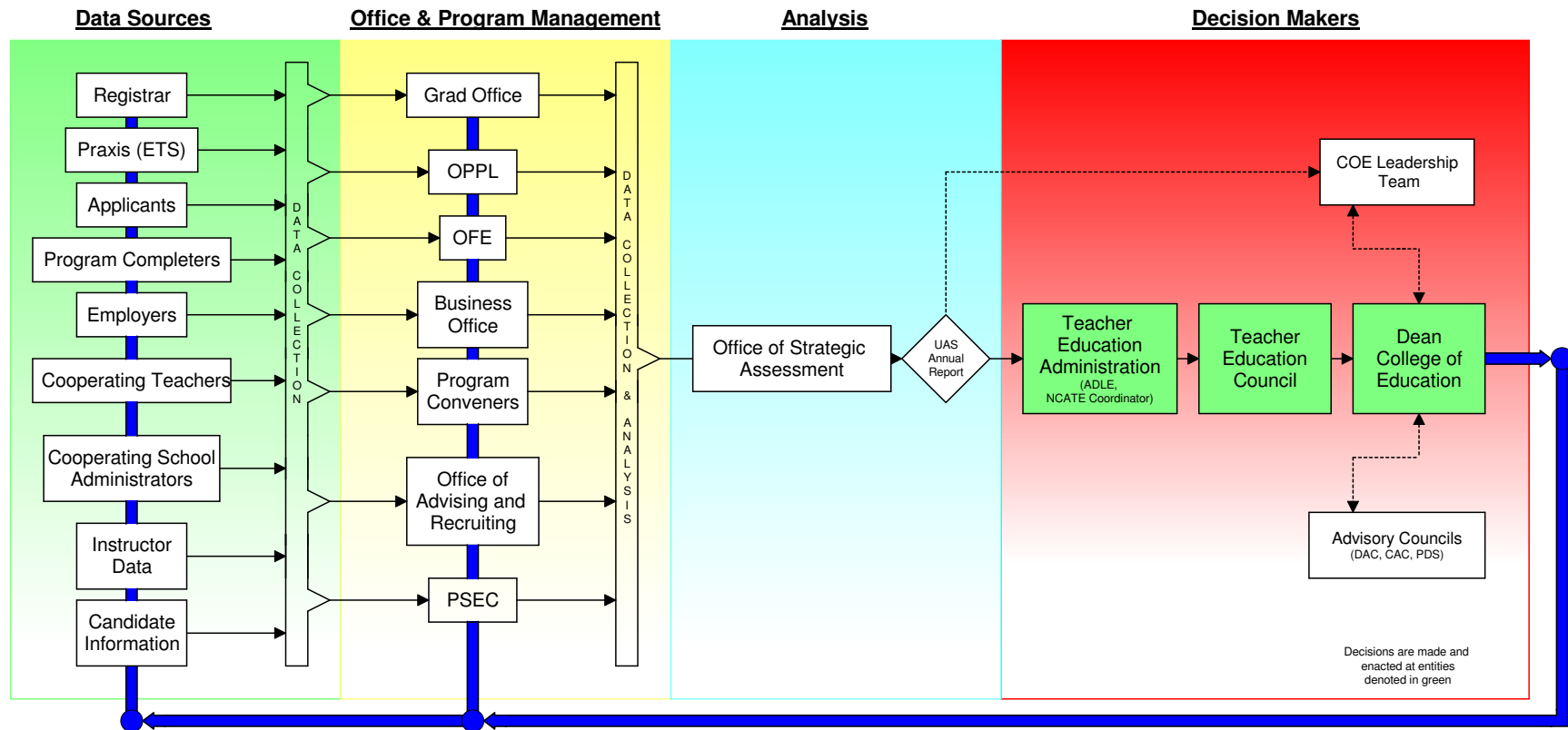


Purdue University Teacher Education Operational Assessment / Decision System



Data Types:

Decision support data gathered include: stakeholder perceptions, candidate performances, demographic information, operational process information, etc.

Data Gathering Methods:

Methods used to collect and store this data include: surveys, course evaluation forms, portfolio assessments, operational performance metrics, grades, etc.

Data Storage:

This information is stored in office and departmental data repositories, both electronic and paper.

Key

- Reporting and Information Sharing
- > Information / Consultation on Request
- Post decision feedback and influence

This chart depicts the way data is used to improve the Purdue Teacher Education Program.

- ETS: Educational Testing Service
- OPPL: Office of Professional Preparation and Licensure
- OFE: Office of Field Experiences
- PSEC: Purdue Student Education Council
- UAS: Unit Assessment System
- ADLE: Associate Dean for Learning and Engagement
- COE: College of Education
- DAC: Dean's Advisory Council
- CAC: College Advisory Committee
- PDS: Professional Development Schools